



**GHOST FISHING**

"THE UNSEEN  
TRUTH"



**Pascal van Erp**

pascal@ghostfishing.org

CEO & Founder Ghost Fishing





# The problem

**‘Ghost fishing’** is a term that describes what happens when derelict fishing gear ‘continues to fish’

- Hotspots: Objects (shipwrecks/reefs)
- Entangled and killed marine life
- Destroyed coral and other habitats
- Dangerous for:
  - ✓ Divers
  - ✓ Marine traffic
  - ✓ Fishermen
- Fishing gear: Nearly 50% of plastic marine pollution!

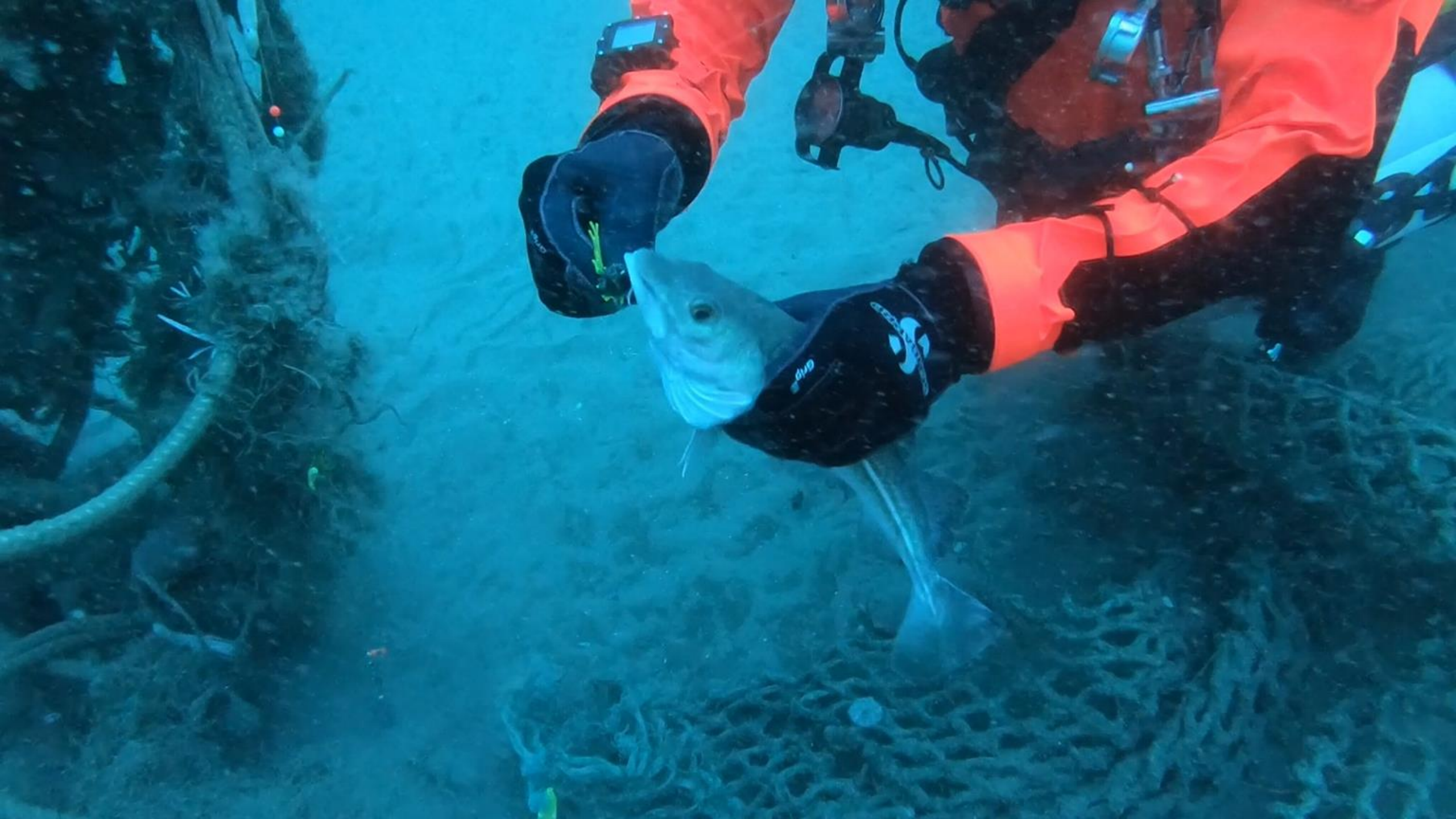




























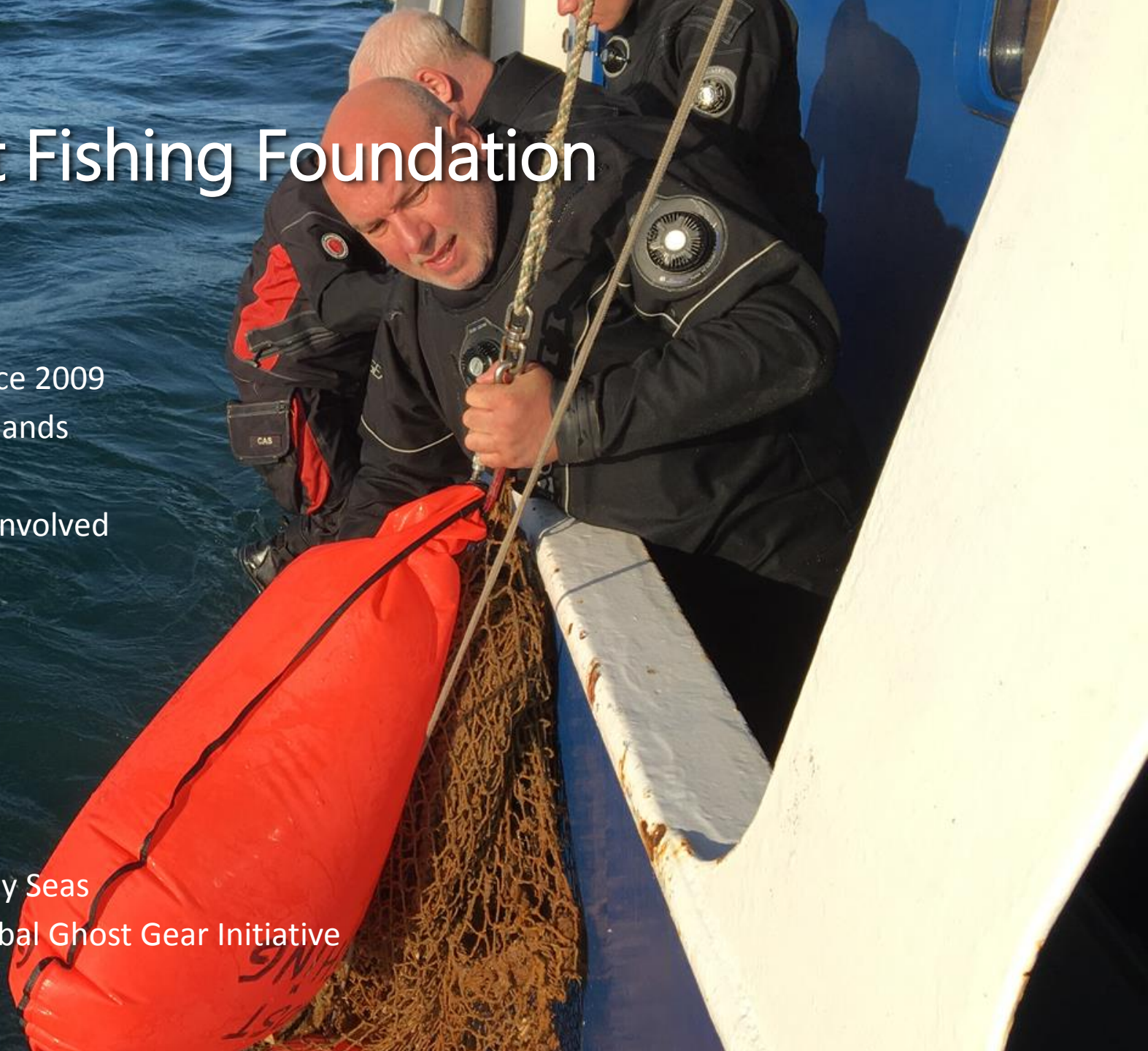






# Ghost Fishing Foundation

- Technical divers
- Charity founded in 2012
- Fishing gear removal since 2009
- HQ based in The Netherlands
- International operations
- Approx. 150 volunteers involved
- Spreading via chapters:
  - United Kingdom
  - Greece
  - Spain
  - Italy
  - New Zealand
  - Lebanon
  - Korea
- Founding partner Healthy Seas
- Active participant of Global Ghost Gear Initiative





# Operation Stone & Pots 2018

## September 2 – 7

### GALWAY, IRELAND



**GHOST FISHING**



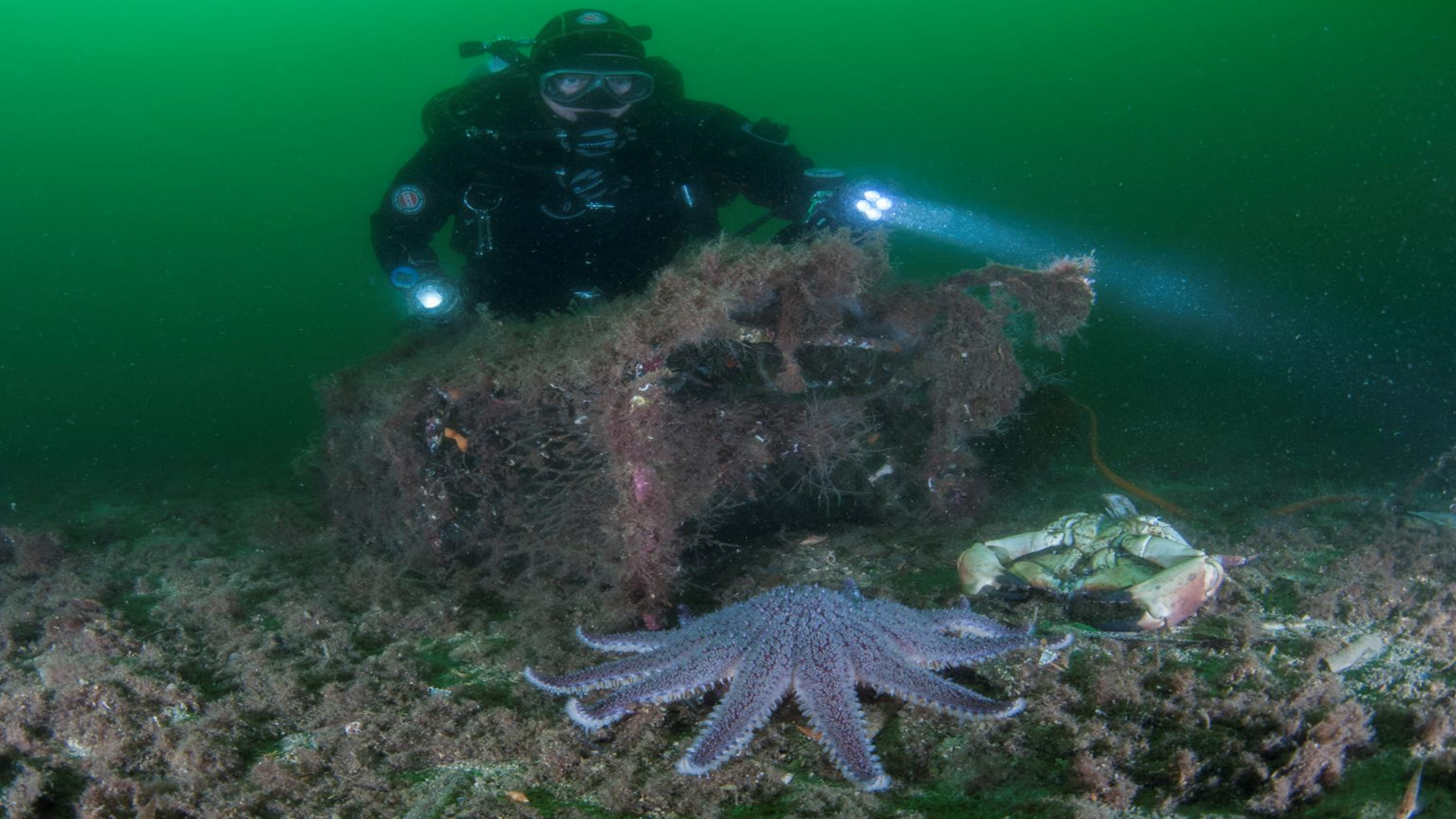


## What we do

---

- **Survey and documenting**
- Physical removal
- Developing standards
- Re-use & Regenerate











## What we do

---

- Survey and documenting
- **Physical removal**
- Developing standards
- Re-use & Regenerate

















## What we do

---

- Survey and documenting
- Physical removal
- **Developing standards**
- Re-use & Regenerate





GH  
FISH

30

KPI











































## What we do

---

- Survey and documenting
- Physical removal
- Developing standards
- **Re-use & Regenerate**

GLOBAL  
MISSION

[www.ghostfishing.org](http://www.ghostfishing.org)

















HEALTHY  
SEAS®

a journey from waste to wear





HEALTHY  
SEAS®

a journey from waste to wear



**ECONYL®**

that are using **ECONYL®** yarn:

INTERFACE

LANO

MERCURY

MILLIKEN

ODULYSS

CARPET



















@ghostfishing



@ghostfishing



@ghostfishing



company/ghost-fishing



ghostfishingorg



ghostfishing



www.ghostfishing.org