



KYSTVERKET
NORWEGIAN COASTAL ADMINISTRATION

Maritime Safety Tools

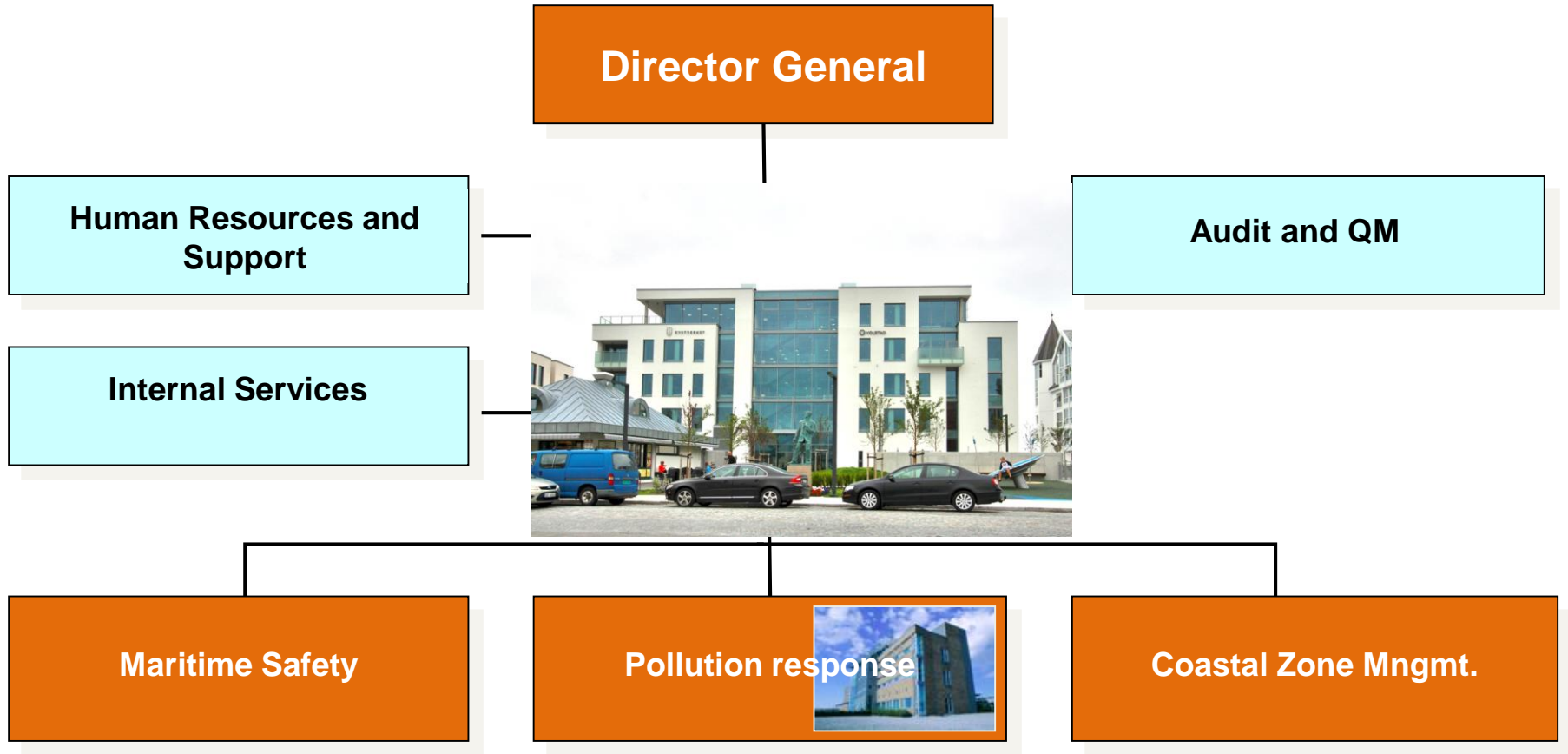
Kirsti Slotsvik, Director General
Ålesund, September, 2nd, 2016

The Norwegian Coastal Administration

- NCA is a government agency reporting to the Royal Ministry of Transport.
- NCA is the competent authority on
 - Coastal zone management
 - Maritime safety
 - Preparedness against acute pollution.



NCA Head Office



"Vision of Zero Accidents"

*There shall be no maritime accidents in Norway
leading to loss of life, serious personal injury or acute
pollution*

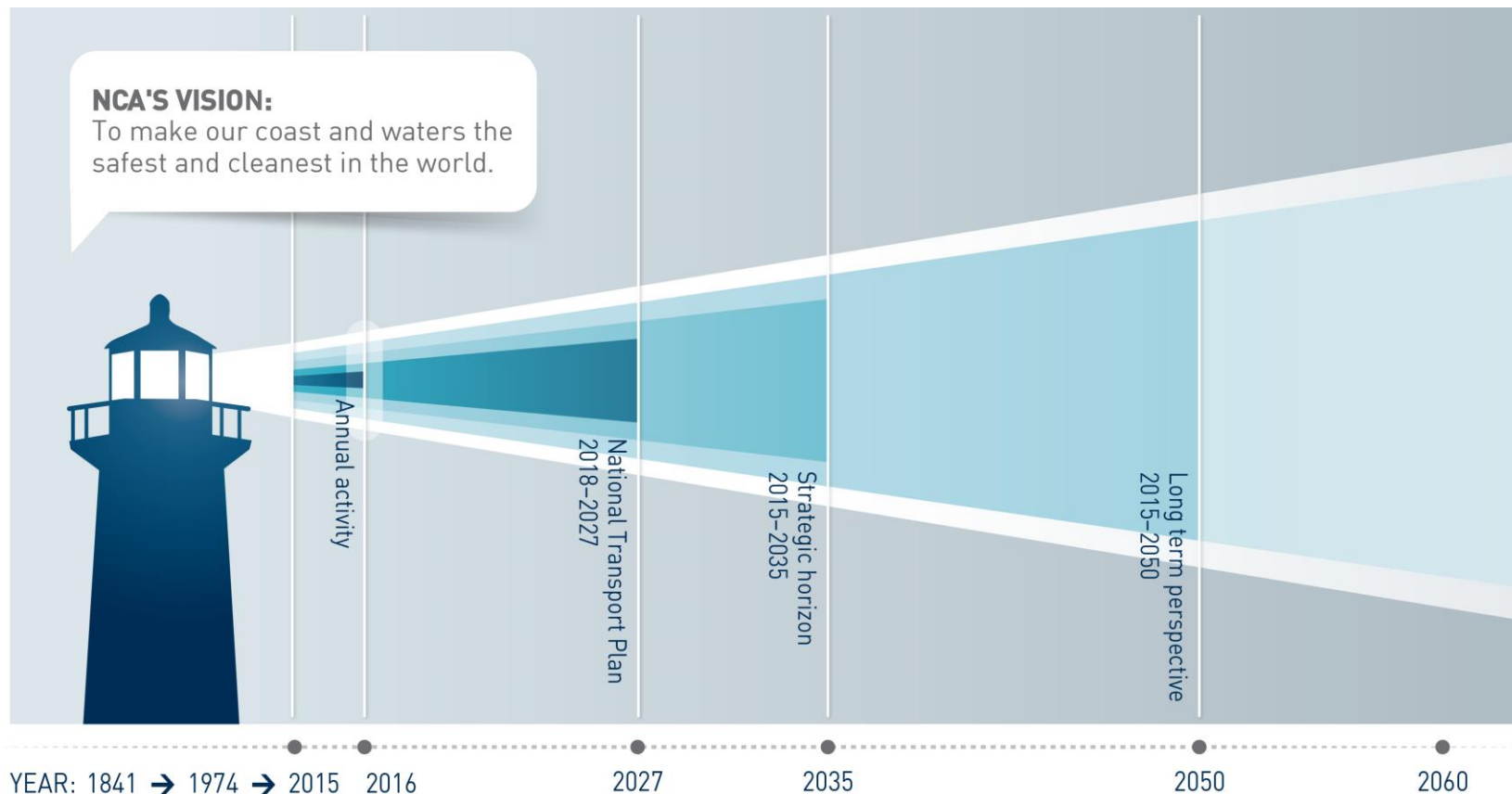


Photo: A Dimmen



KYSTVERKET
NORWEGIAN COASTAL ADMINISTRATION

Preparing for the Future – by Action today



What does the future bring?

Climate challenge

Tougher budget situation

High-tech competence even more crucial

Tougher climate for international cooperation?

Increased Maritime Trade

Photo: Scanpix



KYSTVERKET
NORWEGIAN COASTAL ADMINISTRATION

A conceptual image showing a hand pointing at a map of the Philippines, which is surrounded by three different types of ships (a tugboat, a cargo ship, and a research vessel) on a blue background. The hand is positioned at the top, with the index finger pointing down towards the map. The map is glowing and surrounded by a blue aura. The ships are also glowing and appear to be moving through the water. The background is a dark, blurred green and blue.

Need to Focus on:

- Efficiency
- Modern Technology
- International Cooperation





Maritime Safety

Core missions:

- Maritime pilotage
- VTS
- Aids to Navigation
- Monitoring and Reporting systems
- Port Security (ISPS)



The Maritime Pilotage Service



KYSTVERKET
NORWEGIAN COASTAL ADMINISTRATION

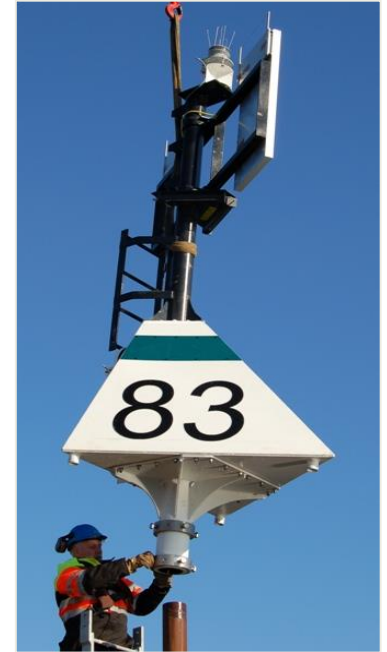
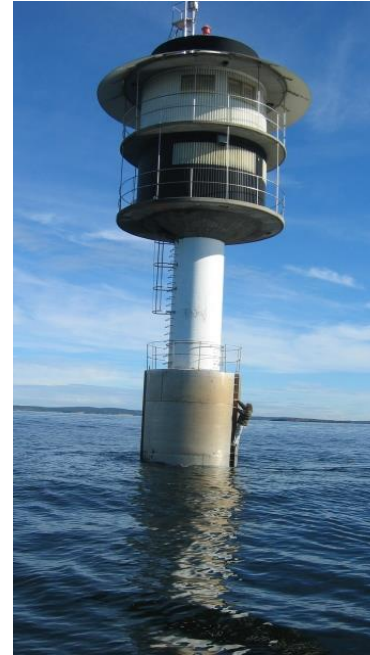
Compulsory Pilotage

- "When navigating within the baseline"
 - Some exempt areas defined
- Vessels:
 - LOA 70 meters or more, or breadth of 20 meters or more
 - Tow where object or objects being towed is 50 meters or more.
 - Passenger vessels of LOA 24 meters or more
 - Dangerous/polluting cargo LOA 35/50 meters or more



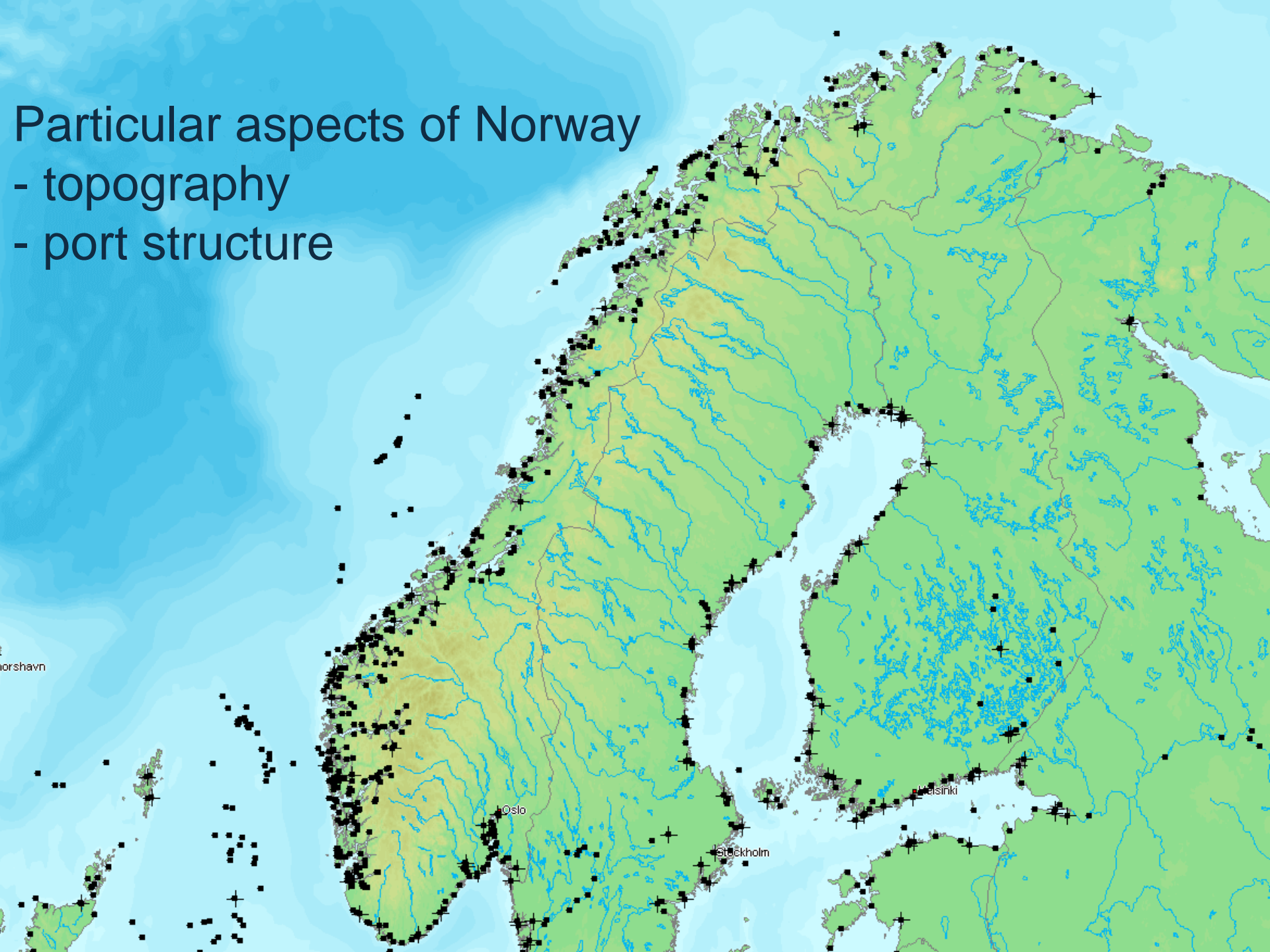
Aids to Navigation (ATON)

- Approx 22.500 units
- Approx 5.500 lanterns / Lights
- Tehnology drivers
 - LED
 - Battery technology
 - Composite Materials



Particular aspects of Norway

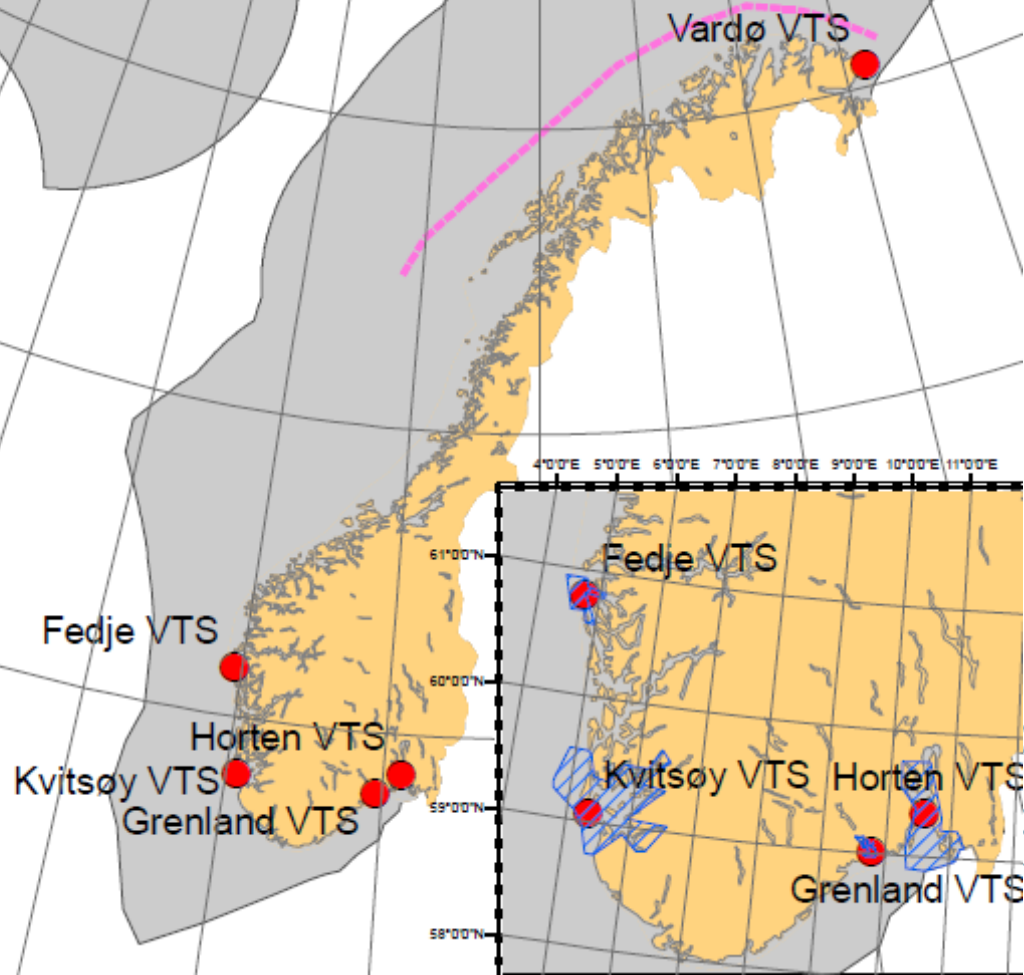
- topography
- port structure



-



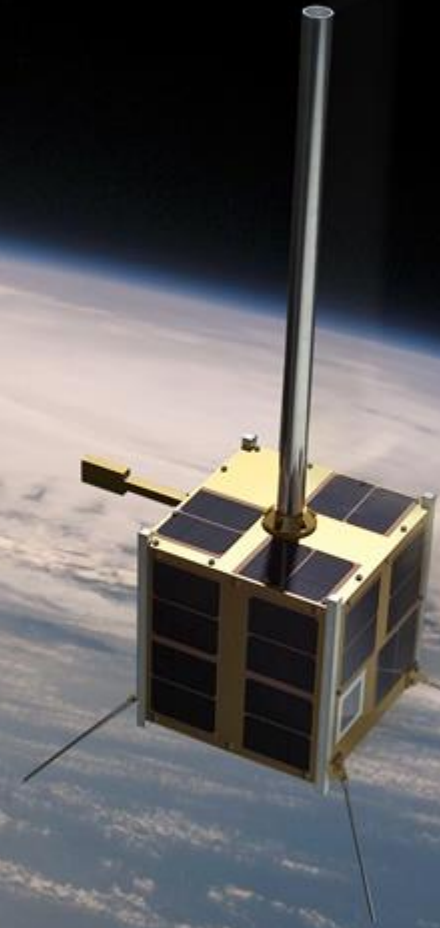
Maritime monitoring - Norway



KYSTVERKET
NORWEGIAN COASTAL ADMINISTRATION

AISSat-1 and AISSat -2: Ocean ship monitoring

- **Launched :**
July 2010 and July 2014
- **Both operational**
- **Data now used by maritime agencies**
- **Data highly valued by users**
- **One additional satellite under construction**



Objective: Situational Awareness

- Maritime safety
 - VTS, SAR support, risk management, tug operations
- Environmental preservation
 - Cargo monitoring, oil spill detection, oil spill response operation support
- Control & Monitoring
 - Sovereignty, customs, immigration, resource management, fee control, etc
- Coastal Zone planning
 - Traffic planning, fairway construction, risk analysis

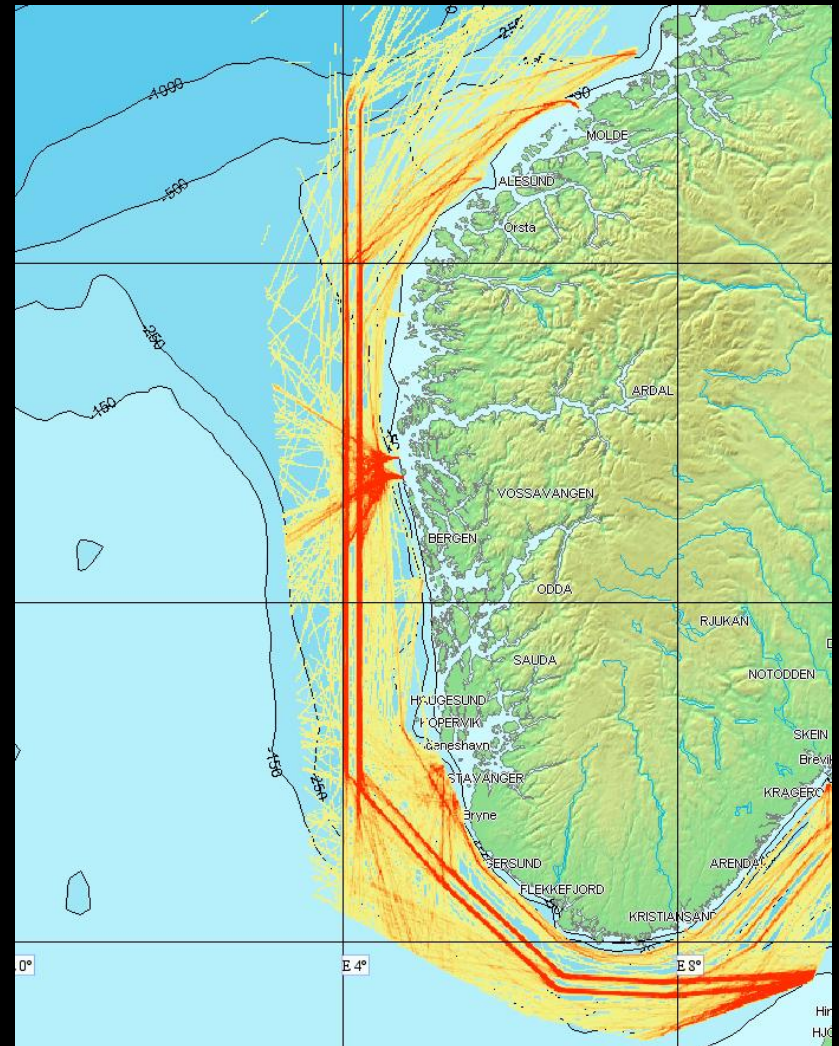
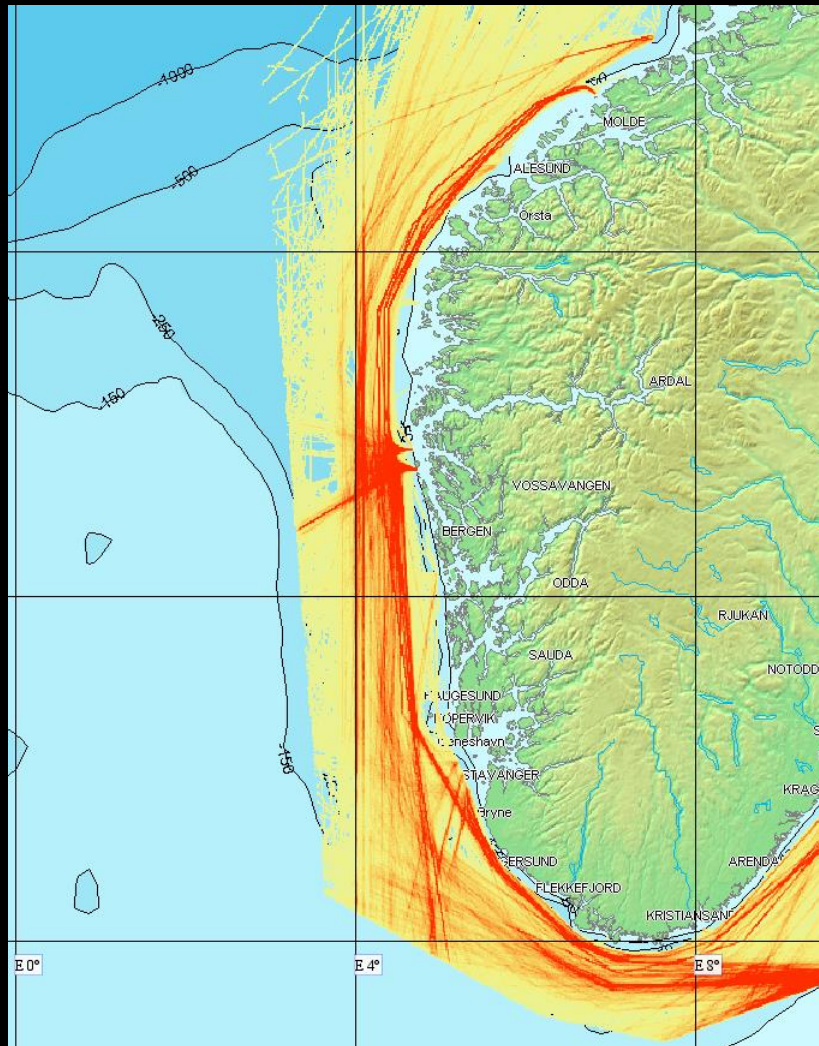


Emergency towing vessels

- 4 emergency standby tugs directed by Vardø VTS



Before and after...







KYSTVERKET
NORWEGIAN COASTAL ADMINISTRATION



KYSTVERKET
NORWEGIAN COASTAL ADMINISTRATION



Kystverket tar ansvar for sjøveien

A National Responsibility

The Norwegian mainland has a coastline of about 100.000 km, - including islands.

Most of the Norwegian population lives and works in the coastal zone.

Safety of life and the protection of the environment are crucial for an efficient and dynamic coastal state.